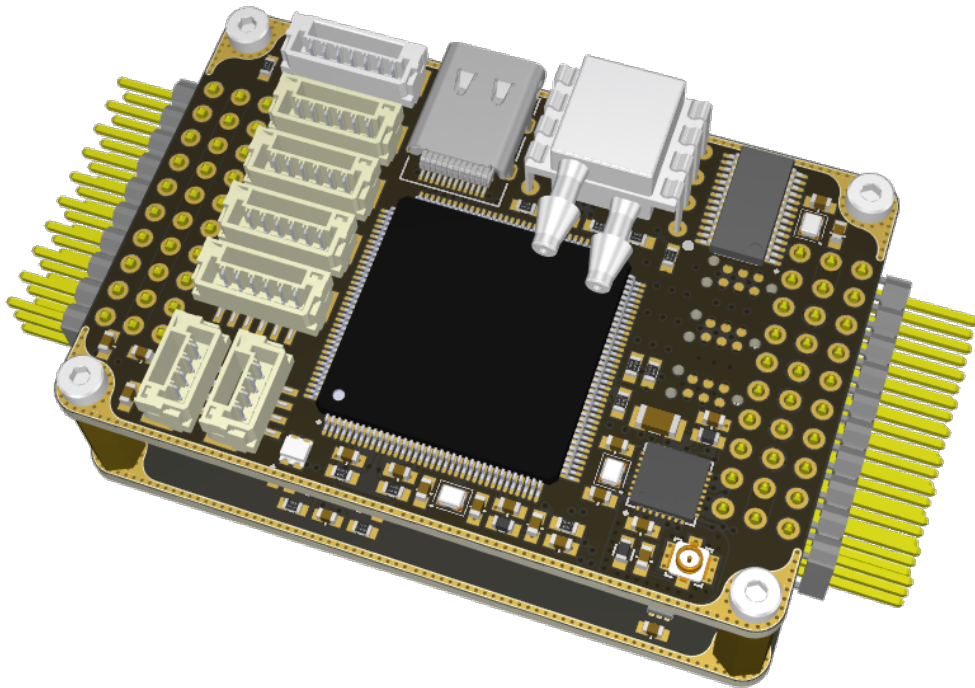

ViaDrone FC v1



Contents

- I Technical Specification 3**
- 1 Processors & Sensors 3**
- 2 Interfaces 3**
- 3 Additional Features 4**
- 4 Electrical data 4**
- 5 Electrical Schematic 5**
- 6 Mechanical data 6**
- 7 Pictures 7**
 - 7.1 MCU BOARD 7
 - 7.2 SENSORS BOARD 8
 - 7.3 POWER BOARD 9



Part I

Technical Specification

1 Processors & Sensors

- FMU Processor: STM32H753
32 Bit Arm® Cortex®-M7, 480MHz, 2MB flash memory, 1MB RAM
- On-board sensors (specific models are subject to change based on product lifecycle and availability)
 - **IMU1** (isolated) ICM-42688-P
 - **IMU2** (isolated) ICM-42670-P
 - **IMU3** ICM-42688-P
 - **BARO1** (isolated) ICP-20100
 - **BARO2** ICP-20100
 - **MAG** (isolated) BMM150
 - **PITOT** 4525DO-DS5AI001DP

2 Interfaces

- 10 IO Ports (8 DShot capable)
- 2x CAN Buses for CAN peripheral
- 2x external I2C
- 1x GPS port (with I2C)
- 1x Telemetry port (with flow control)
- 1x external UART with I2C and GPIO input for NFC (can be used as second GPS port)
- 1x external UART with flow control
- 1x external UART with optional RS422
- 3.3v ADC input
- RSSI (PWM or voltage) input
- PPM-SUM signal input
- 1x NZR LED output (for example WS2812b)



3 Additional Features

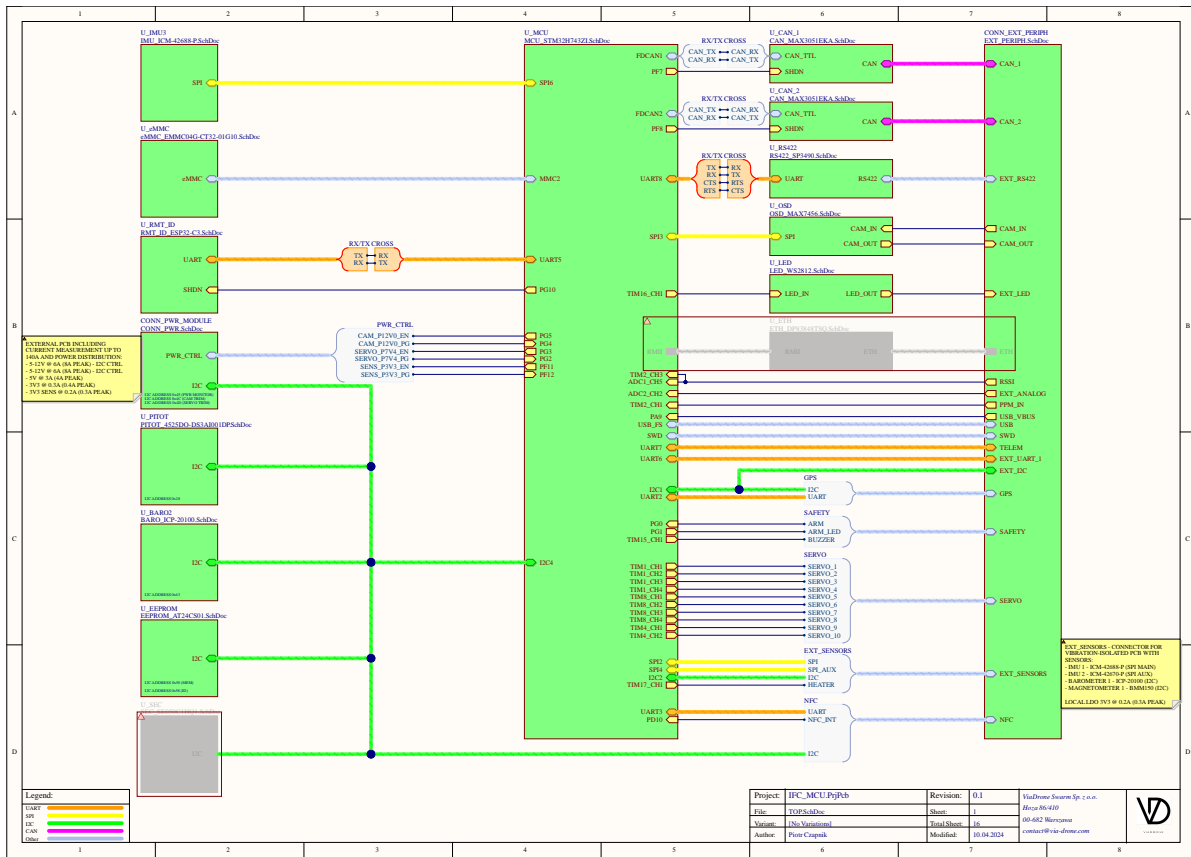
- OSD
- RemoteID
- 4GB eMMC memory

4 Electrical data

- 4-12S INPUT
- Digital voltage measurement
- Digital current measurement (Up to 140A)
- Available Power Domains:
 - 5-12V/6A (PEAK 8A) for servos - I2C control
 - 5-12V/6A (PEAK 8A) for camera - I2C control
 - 5V/3A (4A PEAK) for peripheral
 - 3V3/300mA (400mA PEAK) for peripheral
 - 3V3/200mA (300mA PEAK) for sensors

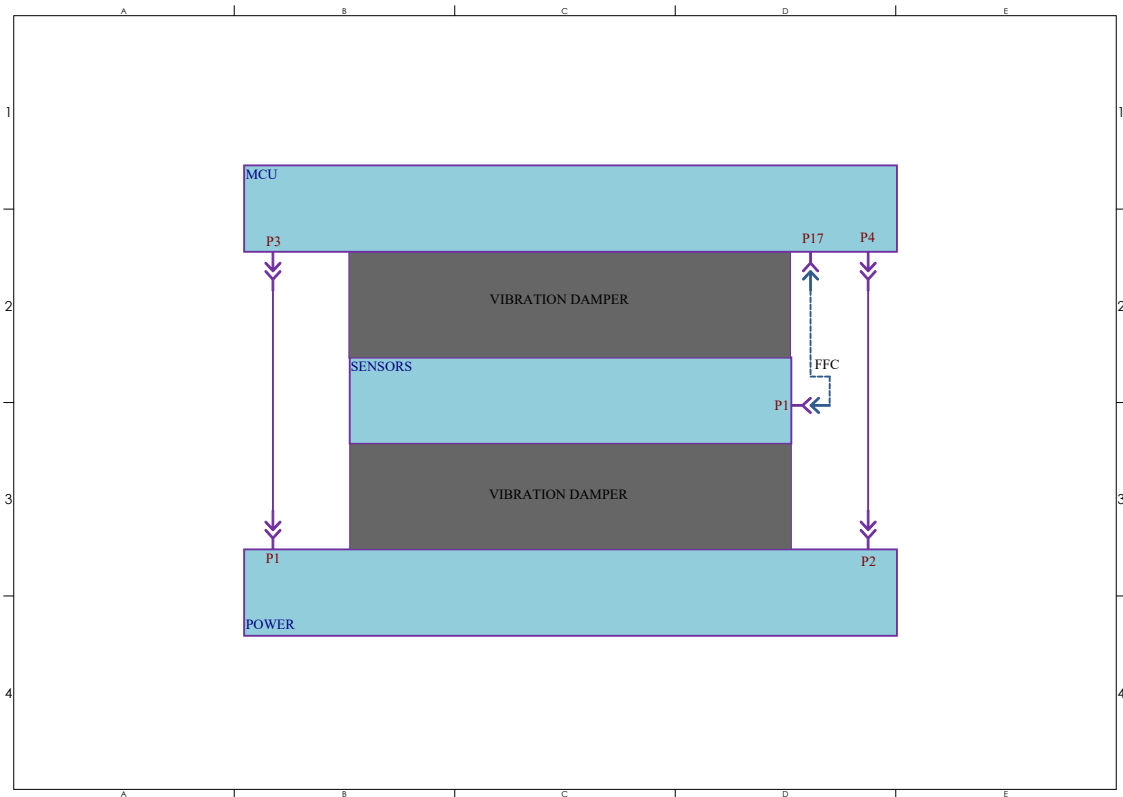


5 Electrical Schematic



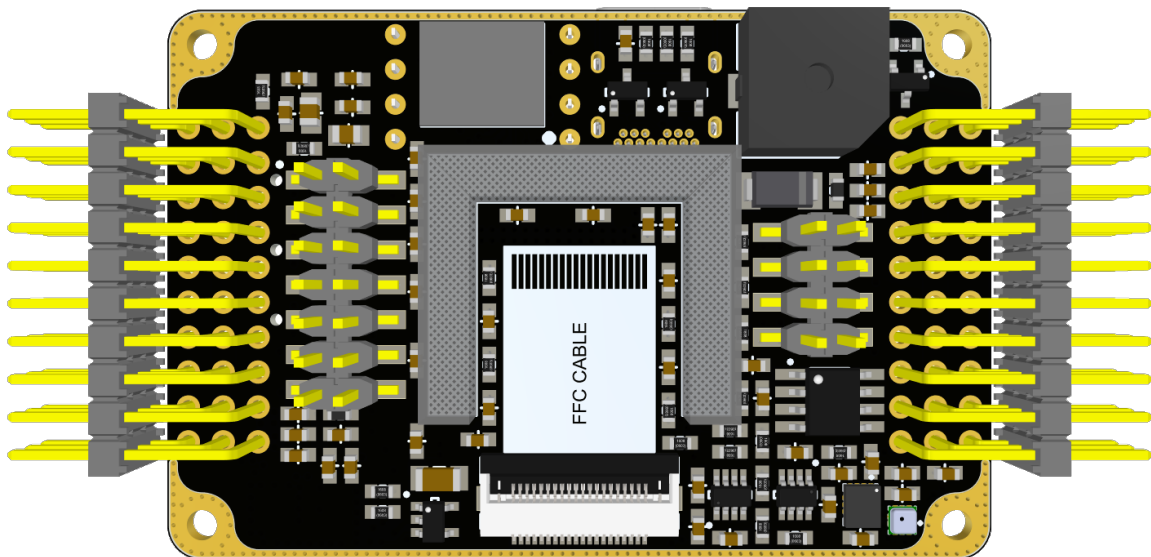
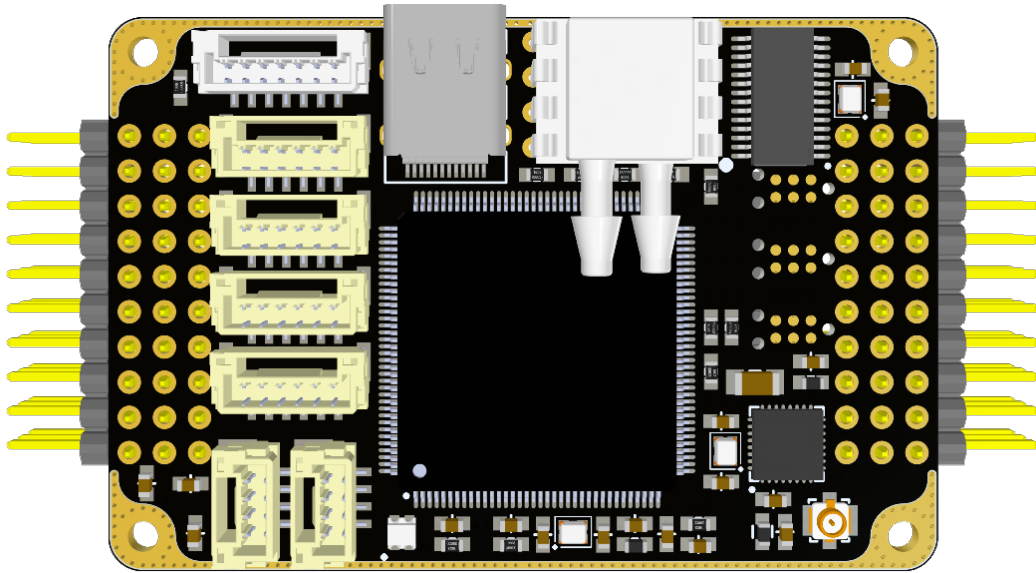
6 Mechanical data

- Dimensions: 40x60x30mm
- Weight: 75g

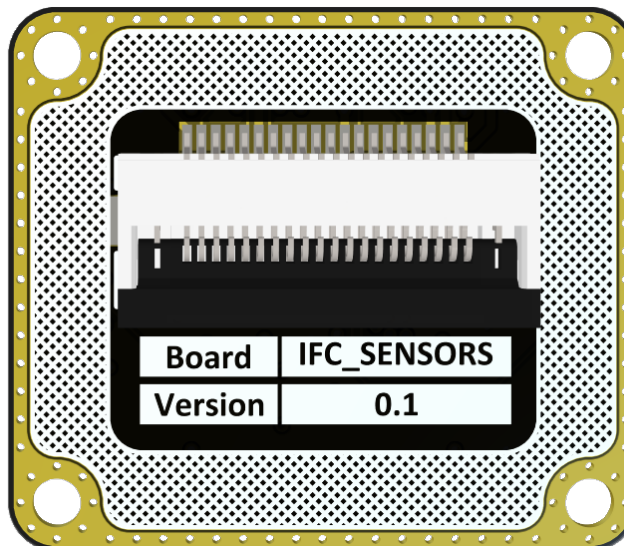
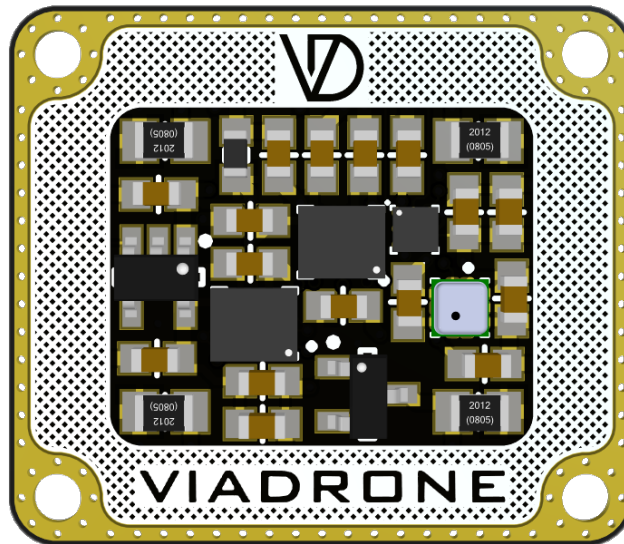


7 Pictures

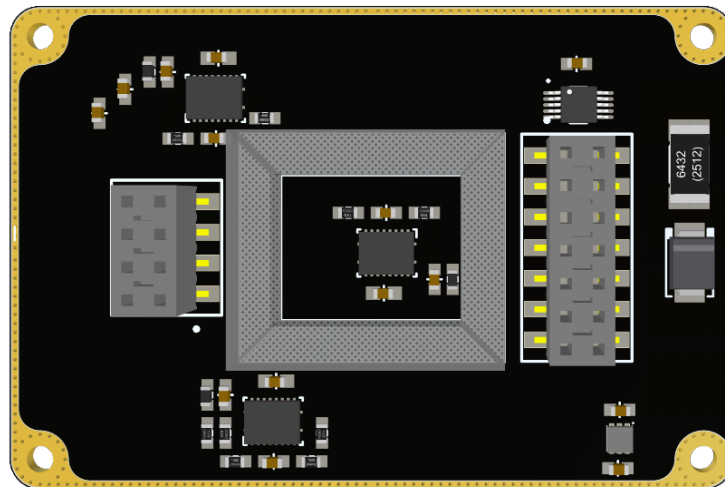
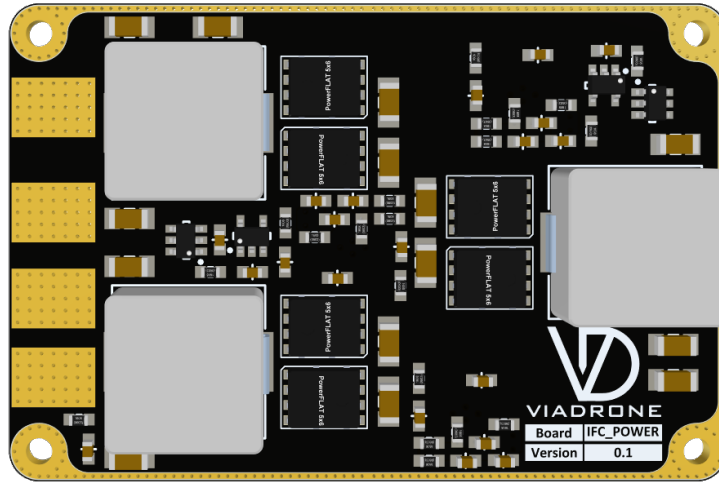
7.1 MCU BOARD



7.2 SENSORS BOARD



7.3 POWER BOARD



END OF SECTION